

WE TAKE ENERGY FROM NATURE'S SOURCE

Innovative and sustainable – because we care about the future



“

ENERGIEQUELLE

A Partner in the Energy Revolution.
For more than 20 years.

*Welcome to
Energiequelle*

OUR VISION

Wind, sun, and biomass are everywhere. We believe that the future belongs to these renewable energies and make a point of looking at the big picture. Our company is a valuable contact for anyone who wants to work with green energy. For the benefit of the environment and future generations.



MICHAEL RASCHEMANN

Managing Director

Energy with a Future A Success Story

More than 20 years ago, we entered the business of renewable energies with conviction and a passionate drive to succeed. Nothing has changed: we continue to take giant steps forward.

Who We Are

We have been planning and implementing projects for tapping renewable energies since 1997. Our main focus is on wind turbines and wind farms, but we also offer our entire portfolio of services, and especially commercial and technical management, for biomass and photovoltaic systems as well as substations and energy storage facilities. With over 250 expert staff in Germany, France, and Finland, we are

*International.
Personal.
Fair.*

an internationally active enterprise. What we want is to help those involved in renewable energy projects turn a profit while working with them to make a meaningful contribution to the "energy transition", which holds great promise for the future. Our many years of experience are available for everyone to take advantage of, internationally and therefore across borders. Just like the wind, with its natural energy.

Our Mission: An Environmentally Responsible Future

We want to make it possible for everyone to benefit from the inexhaustible energy sources that are all around them, because wind, sun, and biomass are just about everywhere for the taking. We are convinced that decentralised renewable energy supply will become the standard, because people today want to reshape the things that are most important to them, including their sources of electricity and heat, in sustainable and environmentally responsible ways. That is why we are so devoted to coming up with cost-effective, forward-looking ideas that meet demand and can be put into practice wherever they are needed – locally, where people live and work.

Renewable energies contribute to building a future that is better, healthier and more aware. This is what we stand for – out of passion and conviction.

Renewables do good

For many years now, we have been active in nurturing social and cultural goals in our project regions throughout Germany. This was why we launched the Energiequelle Foundation. We explicitly aim to raise the awareness of environmental and climate protection issues. We wish to contribute towards creating a liveable future for the generations of our children and grandchildren. We therefore foster science and research in the field of renewable energies. In addition, we are involved in the fields of arts and culture, education and sports, youth and elderly care as well as nature, animal, civil and consumer protection.



Founded in
1997



More than
250
staff



15
sites



INTER-
national



98.8 %
customer
satisfaction



Our Services At a Glance

Energiequelle is a multifaceted partner for renewable energy. Not only in Germany, but also internationally.

We plan and implement turnkey wind farms as well as photovoltaic, biogas plants and energy storage facilities and arrange for their connection to the grid. Our services also include financing and the technical and commercial management of systems after installation. In addition, we plan innovative concepts in the context of integrated energy, and also supply electricity from our plants to end consumers.

**Everything from one source.
Personal, top-rate and innovative.**



Wind

Photovoltaics



Biogas



Energy storage



Grid connection



Electricity sales



Innovation



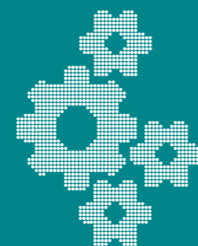
Project Development

Planning and construction of plants for tapping renewable energies.



Financing and Sales

Project financing and attractive opportunities for investors.



Operational Management

Technical and commercial management, supervision, and operation of systems.

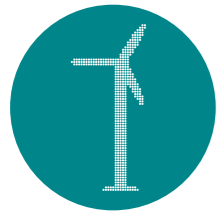


HANS-DIETER KETTWIG

Managing Director of Enercon GmbH



In many ways, good project management is essential for wind energy projects. As a manufacturer, we are very pleased to have found in Energiequelle a business partner that we can rely on to handle projects of this kind. In everything we've done together, we've consistently felt Energiequelle's reliability, honesty, and strong commitment to quality. We are very grateful to them for that reason.



Project Development

From securing a site right through to launch



Wind turbines are environmentally sound and good for business.

But making them happen is no simple matter. It calls for diplomacy and attention to detail while considering the interests of everyone involved and integrating them as well as possible. Energiequelle handles all of the steps for creating and operating renewable energy systems – everything from securing property rights, navigating the complex process of obtaining the necessary permits and licences, to building and commissioning the wind turbines. We are the point of contact for landowners, local communities and governments, and investors.

We are also there to help partners with existing projects. Extensive experience, transparency, fairness, and proven project management skills are the foundation for our work.

Our local partners are well aware of this.



MICHAEL KNAPE
Mayor of Treuenbrietzen



With Energiequelle, we have an open and long-sighted partner at our side that we can deal with as equals. I greatly appreciate their reliability, experience, and cooperative attitude, together with their well-developed ability to respect the 'unique essence' of our town and the surrounding villages. And this view is shared by the entire community. Working together, we have paved the way for a new future in Treuenbrietzen and Germany!



Financing and Sales

We have been a reliable partner in our industry for many years.



We are a well-networked, financially strong company.

We have in-depth knowledge of the market for renewable energies. Our sales representatives also cultivate good long-term relationships with banks and investors. This results in innovative, specially tailored financing solutions for our projects in Germany and other countries. Our own investors also benefit from this, since we can offer them attractive investments that are geared to their wishes and yield robust returns.

We will be happy to persuade you personally.



FRANK ELOY

Member of the Board
of Directors of SaarLB



DR. WULF-DIETMAR STORM

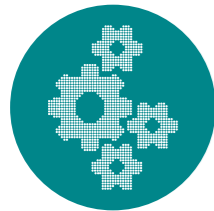
Head of Corporate Accounts
Deutsche Kreditbank AG



We have been actively involved in renewable energy projects since 2003 and have been working very successfully with Energiequelle for nine years now. During this time, we have jointly implemented systems with a total power output of nearly 150 MW in Germany and France. Apart from project financing, Energiequelle has also been one of our bank's corporate customers for many years. Our relationship is characterised by professionalism and trust.

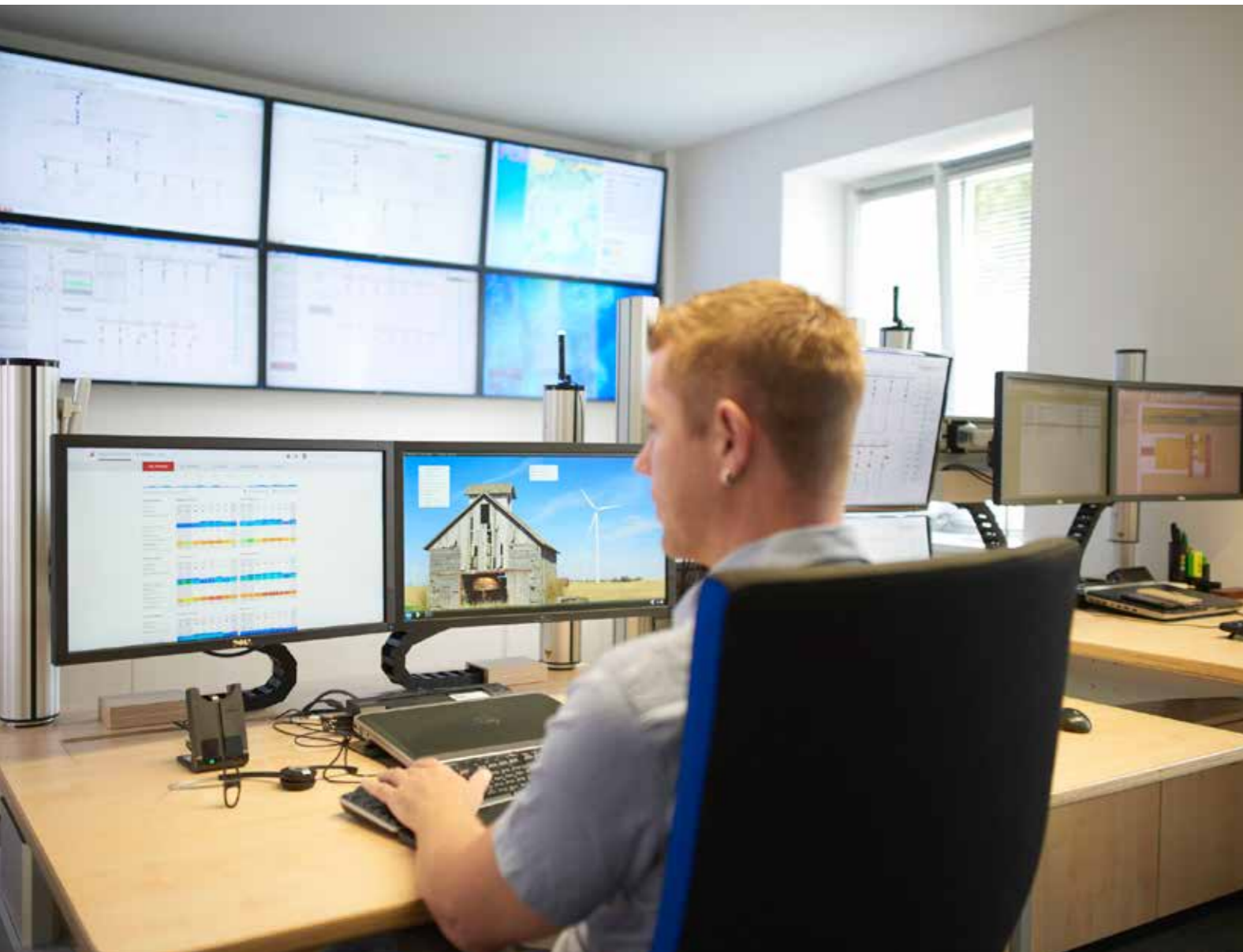


In our financing business, what we value most is the ability to work with others in a spirit of trust. Energiequelle has always proved to be a reliable business partner – which is something we greatly appreciate. Our collaboration in the Feldheim project is a good example.



Operational Management

We take care of your renewable energy system.
Around the clock.



What we offer

Technical. Commercial. Reliable.

Managing renewable energy systems is a complex job. As an experienced partner, Energiequelle can provide a full range of technical support for renewable energy systems, including swift and decisive action if there are any malfunctions or if any other repair or servicing work is urgently needed. This is ensured by a state-of-the-art control center from which our technicians and engineers continuously monitor the condition of all systems in operation.

Our commercial management services include managing leases, billing, meeting insurance requirements, and dealing with legal issues.

Maintenance of landscaped areas and infrastructure around renewable energy systems is also included in our range of services, and much more besides.

Our operational management services are not limited to projects that we have developed ourselves. We are also glad to take over the management of other systems.

Our aim is to ensure that our customers and partners are free of worries and professionally supported at all times and in all respects, also after renewable energy projects have reached completion. In line with our company's commitment to transparency, we regularly and thoroughly report to our customers about everything of relevance, so they always know how their systems are performing.



THOMAS STAUDINGER

Managing Director of re:cap
global investors ag in Zug, Switzerland



With our investors in mind, we chose Energiequelle as partner not only because they know what they are doing, but also because we can count on them to deliver full-scale, reliable support over the long haul, all the way from asset acquisition to the operational management phase. This way we always know that our investments are in good hands.

Support from A to Z

It is one thing to plan and implement a renewable energy system. The maintenance of such systems, as well as their commercial and technical manage-

ment, is a different matter entirely. Energiequelle is able to offer all of these services "under the same roof". With first-class partnership.

References

100 % Energiequelle.
And proud of it.

Feldheim

Feldheim in the German state of Brandenburg meets all of its own energy needs. Its residents owe their energy self-sufficiency to a **biogas plant** and a nearby wind farm comprising with **more than 60 wind turbines**. The wind farm supplies electric power, while heat comes from the biogas plant. Naturally occurring fluctuations in the power supply are smoothed out by a latest-generation **battery storage system**. On especially cold days, extra heat is provided by a modern heating plant fueled by wood chips as well as a Power to Heat System.



PETRA RICHTER
Mayor



We're proud of what we have achieved in Feldheim with Energiequelle. Our energy self-sufficiency puts us in an excellent position for mastering the future and provides our children and grandchildren with an eco-friendly supply of power and heat. This is our contribution to the energy transition.



Lausitzring

Thanks to a project called "Green Lausitzring," this German race track will soon be able to meet all of its heat and power supply needs. Energiequelle helped make this possible by building and commissioning the world's most powerful wind turbine, generating **17 million kilowatt-hours** a year on average. Previously, we also installed a solar carport system with an adjacent **solar fueling station** and a **biogas plant** that provides both electricity and heat.



La Ferrière

In 2014 we commissioned **eight plants** in La Ferrière, France. The greatest challenge was mastering the "installations classified for the protection of the environment" (ICPE) procedure, which was also new in that country. Besides preliminary checks to determine how a facility affects the environment, it calls for extensive questioning of local residents. This success was achieved thanks to good cooperation with the agency that issues the required permits and to the considerable experience of our French subsidiary, P&T.



DR. BJÖRN KESSEL

Investment Director of the CEE Group
(Investor in the wind farm in La Ferrière, France)



Here at the CEE Group, our first experience with Energiequelle was in connection with obtaining land rights and planning and building six wind turbines in France in 2012. We got to know and appreciate them as reliable, professional partners. The entire project went smoothly from start to finish, and we continue to be very happy with the operational management of the wind farm. Based on this good experience, in 2014 we purchased two more wind farms with a total of 14 turbines from Energiequelle.



Wind Energy
More than 730 WEPs in Germany and France more than 1300 MW



Photovoltaics
33 photovoltaic plants in Germany, Spain, and Italy 67 Mwp



Biogas
18 biogas plants in Germany 11 MW of electric power



Power Grid Operation
20 high-voltage substations in Germany with 1800 MVA
Approx. 450 medium-voltage substations
About 900 km of underground cables



Storage
1 energy storage facility in Germany 10 MW



Our Sites

Germany, France, Finland



We're Here for You

Our customers can find us where they need us most: in their own locality. Our headquarters is in Kallinchen near Berlin and our largest branch office is in Bremen. We also have offices in Hanover, Oldenburg, Penzing, Putlitz, Erfurt, Rostock, Leipzig, Guntersblum and Dresden.

Our subsidiary P&T looks after our French customers from its bases in Rennes, Dijon and Royan. Energiequelle is represented in Finland through a branch in Helsinki.

We are locally represented and quick to respond.



We care about the environment

The principle of environmental protection is firmly anchored in the environmental guidelines of Energiequelle GmbH and is constantly being expanded. We have adopted framework conditions that are binding for all environmental policy decisions and strengthen the environmental awareness of our employees.

With the introduction of an environmental management system in accordance with the requirements of the EMAS Regulation, all measures introduced so far to protect the environment have been bundled and systematised. In our environmental statement, we inform the public about our environmental policy, the environmental programme and the environmental indicators.



“

ENERGIEQUELLE

We are your Energy.
With a Future.





Energiequelle GmbH

Kallinchen branch

Hauptstraße 44
15806 Zossen, Germany
T +49 33769 871 0

Bremen branch

Heriwardstraße 15
28759 Bremen, Germany
T +49 421 626 769 0

www.energiequelle.de
info@energiequelle.de

